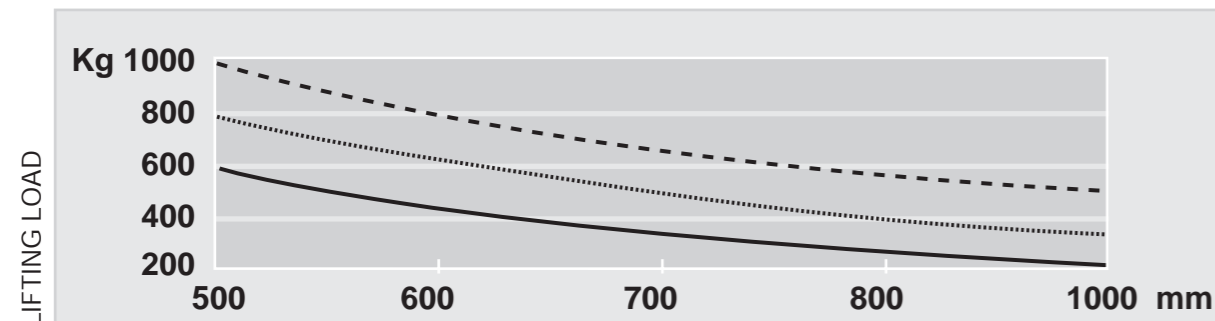


SPECIFICATION SHEET

MAST DETAILS ME AC 6 - 8C - 10C

HEIGHT		STANDARD INCL. SIDE-SHIFT				DUPLEX GAL INCL. SIDE-SHIFT				TRIPLEX GAL INCL. SIDE-SHIFT		
Lifting	h3	2900	3200	3800	4200	2900	3200	3800	4200	4350	4800	5700
Height mast collapsed	h1	1915	2065	2365	2565	1915	2065	2365	2565	1915	2065	2365
Height mast extended	h4	3350	3650	4250	4650	3350	3650	4250	4650	4795	5250	6150
Free lift	h2	-	-	-	-	1455	1605	1905	2105	1455	1605	1905
Width ME 6 AC - ME 8C AC	B	800	800	860	860	800	800	860	860	860	860	900
Width ME 10C AC	B	850	850	910	910	850	850	910	910	910	910	950

— ME 6 AC ME 8C AC ---- ME 10C AC

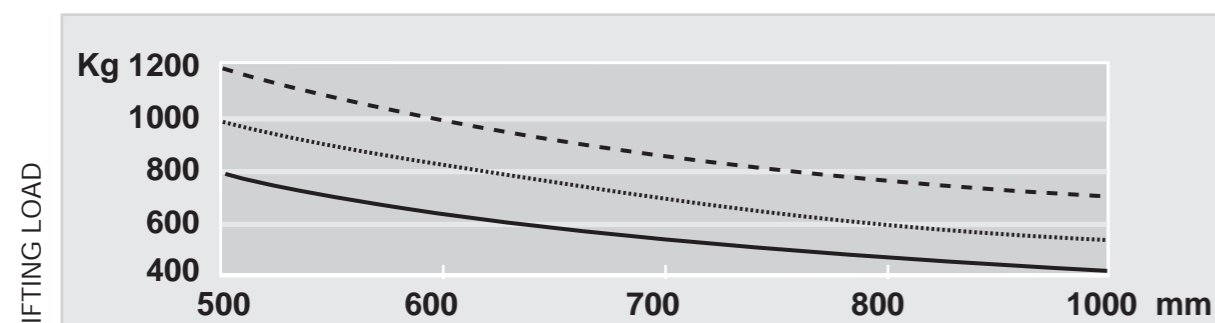


DISTANCE

MAST DETAILS ME AC 8 - 10 - 12

HEIGHT		STANDARD INCL. SIDE-SHIFT				DUPLEX GAL INCL. SIDE-SHIFT				TRIPLEX GAL INCL. SIDE-SHIFT		
Lifting	h3	2900	3200	3800	4200	2900	3200	3800	4200	4350	4800	5700
Height mast collapsed	h1	1935	2090	2390	2590	1935	2090	2390	2590	1935	2090	2390
Height mast extended	h4	3415	3720	4320	4720	3415	3720	4320	4720	4870	5325	6225
Free lift	h2	-	-	-	-	1455	1605	1905	2105	1455	1605	1905
Width ME 8 AC - ME 10 AC	B	860	860	860	920	860	860	860	920	920	920	960
Width ME 12 AC	B	890	890	890	950	890	890	890	950	950	950	990

— ME 8 AC ME 10 AC ---- ME 12 AC



DISTANCE



SPECIFICATION SHEET				ME 6 AC	ME 8C AC	ME 10C AC	ME 8 AC	ME 10 AC	ME 12 AC	
CHARACTERISTICS	1	Manufacturer	Abbreviated form	V.MARIOTTI S.r.l.	V.MARIOTTI S.r.l.	V.MARIOTTI S.r.l.	V.MARIOTTI S.r.l.	V.MARIOTTI S.r.l.	V.MARIOTTI S.r.l.	
	2	Models	Manufacturer's model	ME 6 AC	ME 8C AC	ME 10C AC	ME 8 AC	ME 10 AC	ME 12 AC	
	3	Capacity	Q Lifting load	600	800	1000	800	1000	1200	
	4	At load center	C Distance	500	500	500	500	500	500	
	5	Type of drive	Electric (Battery) - Diesel - Fuel gas	electric	electric	electric	electric	electric	electric	
	6	Type of steering	Driver standing - driver sitting - outside	driver sitting	driver sitting	driver sitting	driver sitting	driver sitting	driver sitting	
	7	Tyres	V Cushion - SE Superel. front / rear	V / V	V / V	V / V	V / V	V / V	V / V	
	8	Wheels	Quantity (♦ = driven) front / rear	2 / 1♦	2 / 1♦	2 / 1♦	2 / 1♦	2 / 1♦	2 / 1♦	
DIMENSIONS	9	Lift	h3 Lift	2900	2900	2900	3200	3200	3200	
	10		h2 Normal free lift (see Mast details)	\	\	\	\	\	\	
	11	Forks	Length(L) x Width(F) x Thickness(S)	Fem I 800x80x30	Fem I 800x80x30	Fem I 800x80x30	Fem II 1000x100x35	Fem II 1000x100x35	Fem II 1000x100x35	
	12	Tilt	Of the mast- forward (α) / backward (β)	2° 30' / 6°	2° 30' / 6°	2° 30' / 6°	2° 30' / 6°	2° 30' / 6°	2° 30' / 6°	
	13		L2 Length at the fork backrest	1420*	1420*	1420*	1570*	1570*	1570*	
	14		B Width	800	800	850	860	860	890	
	15	Overall dimensions	h1 Height, mast collapsed	1915	1915	1915	2090	2090	2090	
	16		h4 Height, mast extended	3350	3350	3350	3720	3720	3720	
	17		h5 Height overhead guard	1890	1890	1890	1930	1930	1930	
	18		h6 Height seat from floor	850	850	850	930	930	930	
19	Turning radius	Wa	1195#	1195#	1195#	1327#	1327#	1327#		
20	Distance of load	X From centre front axle	220*	220*	220*	242*	242*	242*		
21	Width of aisle	O (b'xb²) 1200x800 - 1200x1000	1810 / 1870	1810 / 1870	1830 / 1890	1855 / 1910	1855 / 1910	1855 / 1910		
22		Ast 3 (b'xb²) 1200x800 - 1200x1000	2870 / 2900	2870 / 2900	2870 / 2900	3023 / 3053	3023 / 3053	3023 / 3053		
PERFORMANCES	23	Stability tests	Complying with EEC Directive 2006/42/EC	yes	yes	yes	yes	yes	yes	
	24		Driving with / without load	7,5 / 7,8	7,5 / 7,8	7,2 / 7,8	8,5 / 9,0	8,5 / 9,0	8,0 / 8,5	
	25	Speeds	Lifting with / without load	0,240 / 0,298	0,220 / 0,298	0,210 / 0,298	0,25 / 0,36	0,24 / 0,36	0,22 / 0,36	
	26		Lowering with / without load	0,39 / 0,35	0,40 / 0,35	0,43 / 0,35	0,41 / 0,35	0,43 / 0,35	0,45 / 0,35	
	27	Draw- bar- pull	At the hook max with / without load	1500 / 1700	1400 / 1600	1300 / 1500	3200 / 3300	3100 / 3250	3100 / 3200	
	28	Gradeability	with / without load	15 / 18	13 / 18	9 / 15	15 / 18	13 / 16	10 / 15	
	29		Max. with / without load	20 / 23	18 / 22	16 / 20	20 / 25	20 / 25	18 / 22	
	WEIGHT	30	Weight	Truck, battery included	1300•	1490•	1990•	1770•	1900•	2150•
		31	Axle load	Without load front / rear	540 / 760	590 / 890	740 / 1250	830 / 940	850 / 1050	870 / 1280
32		With load front / rear		1570 / 330	1910 / 380	2570 / 420	2140 / 430	2500 / 400	2890 / 460	
33			Number front / rear	2 / 1	2 / 1	2 / 1	2 / 1	2 / 1	2 / 1	
CHASSIS	34	Wheels	Dimensions front	300x120x203	300x120x203	300x145x203	330x127x203	330x127x203	330x152x203	
	35		Dimensions rear	300x120x203	300x120x203	300x145x203	330x127x203	330x127x203	330x152x203	
	36	Wheel base	Y min. / max. (variable)	933 / 1015	933 / 1015	933 / 1015	1070 / 1158	1070 / 1158	1070 / 1158	
	37	Wheel track	Wheels centerline front	687	687	712	736	736	741	
	38	Ground clearance	M With load at the lowest point	70	70	70	85	85	85	
	39		M1 With load of wheel base	75	75	75	95	95	95	
	40	Brakes	Service (foot) brake	hydraulic	hydraulic	hydraulic	hydraulic	hydraulic	hydraulic	
	41		Hand parking brake	mechanical	mechanical	mechanical	mechanical	mechanical	mechanical	
DRIVE	42	Battery	Type	Traction	Traction	Traction	Traction	Traction	Traction	
	43		Volt/Ah (capacity at 5 hours' discharge)	24/270 - 24/500	24/270 - 24/500	24/500	36/270 - 36/500	36/270 - 36/500	36/375 - 36/500	
	44		Weight	265• - 400	265• - 400	400•	365• - 550	365• - 550	440• - 550	
	45	Power steering	Hydraulic - electronically controlled	yes	yes	yes	yes	yes	yes	
	46	Electric motors	Hourly output of driving motor	2	2	2	3	3	3	
	47		Lifting motor, output	3	3	3	4,5	4,5	4,5	
	48	Traction Contr.	AC MOSFET	yes	yes	yes	yes	yes	yes	
49	Pump control	Electronic by microprocessors	yes	yes	yes	yes	yes	yes		
50	Working Press.	For additional attachments	90	140	165	115	140	185		

ME AC 6-8C-10C

- Voltage 24V
- Traction motor AC
- Electronic control of the lifting
- Tyres diameter 300x120(145)x203
- Power steering
- Masts from 2900 mm to 5700 mm
- Integrated sideshifter



ME AC 8-10-12

- Voltage 36V
- Traction motor AC
- Electronic control of the lifting
- Tyres diameter 330x127(152)x203
- Power steering
- Masts from 2900 mm to 5700 mm
- Integrated sideshifter



with mast in vertical position * included side-shift Ast 3 = $Wa + \sqrt{(x + b)^2 + (b^2/2)^2} + a$

★ On demand installation of the flashlight inside the height of the overhead guard h5

